

IPIN 2016 - Competition

October 4-7, 2016 / Alcala de Henares, Madrid, Spain

Multi-modal Indoor Positioning System (MIPS)

Andrew YongGwon

Lee

Abhishek Kumar

Samsung Electronics

DMC R&D Center

Korea

Paweł Wilk

Wojciech Jaworski

Paweł Zborowski

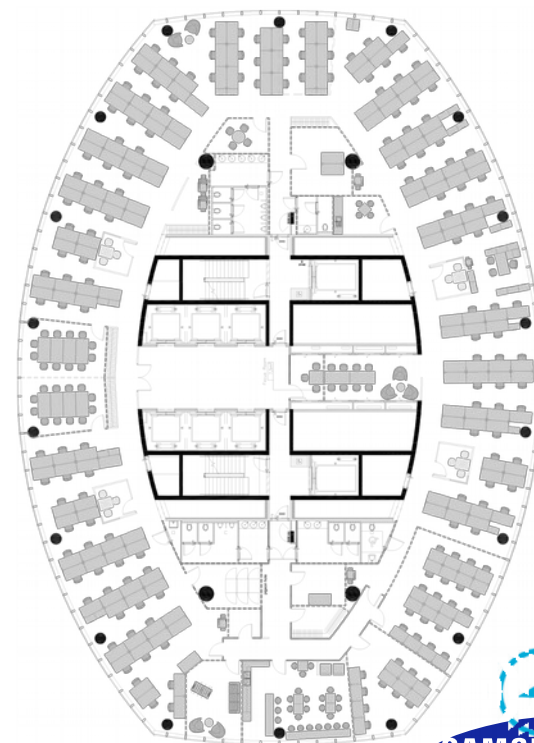
Witold

Chmielowiec

Marcin Skorupa

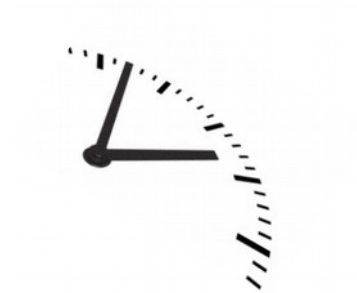
Samsung Electronics

R&D Poland



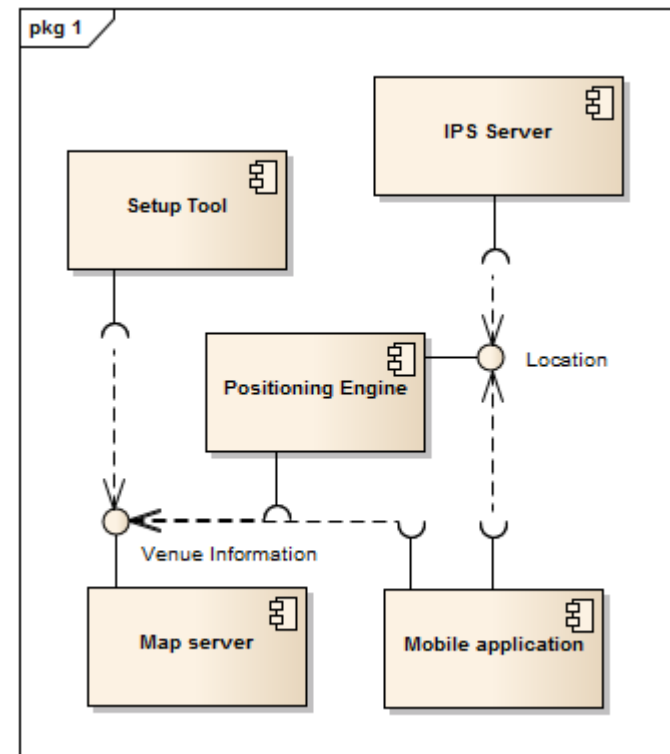
Goals

- Real time position
- Best possible accuracy
- No additional infrastructure
- Removing survey



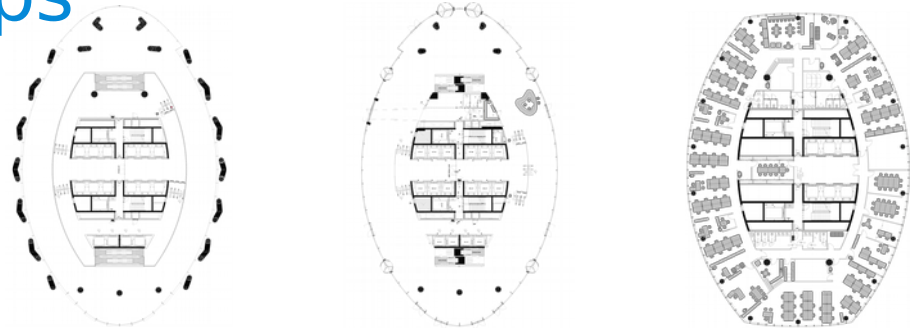
Components

- Map server
- Setup tool (Android application)
- Positioning Engine



Map server

- Stores indoor maps



- Stores configuration



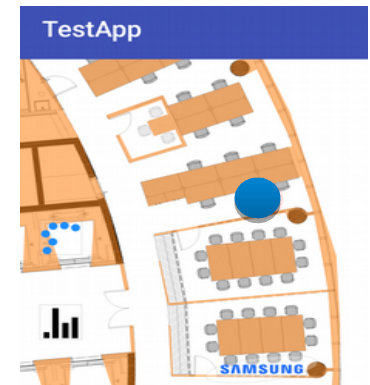
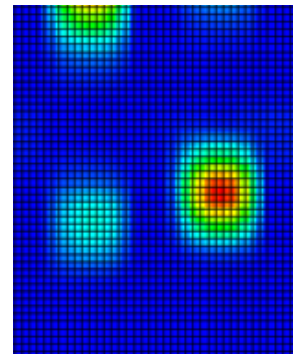
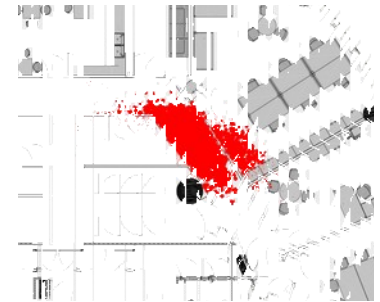
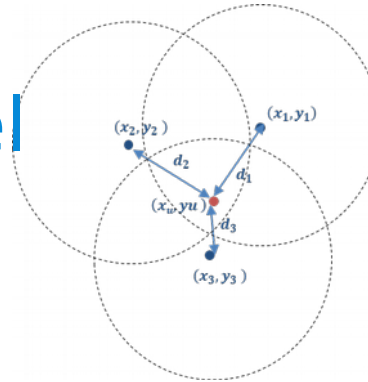
Setup Tool (Survey tool)

- Calibration of algorithm parameters



Positioning Engine

- Propagation Model
- PDR
- Particle filtering
- Map matching



Thank You

